

SewWrite



SEWWRITE USER MANUAL

v1.3.7



NOVEMBER 22, 2016
S & S COMPUTING
Oak Ridge, TN 37830

Table of Contents

1. SewWrite	5
1.1 Introduction	5
1.1.1 Getting Started.....	5
1.1.2 Contacting Us	6
1.1.3 FAQ	6
1.1.4 Purchase SewWrite	7
1.1.5 Videos.....	7
1.2 Menus	7
1.2.1 File Menu	7
1.2.2 Edit Menu	8
1.2.3 View Menu	8
1.2.4 Tools Menu	9
1.2.5 Window Menu.....	9
1.2.6 Help Menu	10
1.3 File Commands	10
1.3.1 New	10
1.3.2 Open	10
1.3.3 Close.....	11
1.3.4 Save	11
1.3.5 Save As.....	12
1.4 Edit Commands	12
1.4.1 Undo.....	12
1.4.2 Cut	12
1.4.3 Copy	12
1.4.4 Paste	12
1.4.5 Select All	13
1.5 View Commands	13
1.5.1 Toolbars.....	13
1.5.2 Large Icons	16
1.5.3 Grid.....	16
1.5.4 Units	16
1.6 Tools Commands.....	17
1.6.1 Calibrate Ruler	17



1.6.2 Editor Path.....	17
1.6.3 Resize Toolbar Icons.....	18
1.6.4 Stitch Properties.....	18
1.7 Windows Commands.....	19
1.7.1 Cascade.....	19
1.7.2 Tile.....	19
1.7.3 All Windows.....	19
1.8 Help Commands.....	20
1.8.1 Help Topics.....	20
1.8.2 Auto-Update.....	20
1.8.3 Update Now.....	20
1.8.4 About SewWrite.....	20
1.8.5 Change (History) Log.....	20
1.8.6 Context Help.....	20
1.9 Utilities.....	21
1.9.1 File Open Dialog.....	21
1.9.2 File Save As Dialog.....	21
1.9.3 Font Selection.....	23
1.9.4 Font Size.....	23
1.9.5 Line Spacing.....	23
1.9.6 Kerning.....	23
1.9.7 Monogram Styles.....	24
1.9.8 Paragraph Alignment.....	25
1.9.9 Paste Image Template.....	26
1.9.10 Status Bar.....	27
1.9.11 Symbol Dialog.....	27
1.10 Character Properties.....	28
1.10.1 Bold.....	28
1.10.2 Bullets.....	28
1.10.3 Color.....	28
1.10.4 Decrease Letter Size.....	28
1.10.5 Increase Letter Size.....	28
1.10.6 Italic.....	29
1.10.7 Outline.....	29

1.10.8 Para Center	29
1.10.9 Para Left	29
1.10.10 Para Right	29
1.10.11 Subscript.....	29
1.10.12 Superscript.....	29
1.10.13 Underline	29



1. SewWrite

1.1 Introduction

1.1.1 Getting Started

Welcome to **SewWrite**, an application designed to allow you to create quality lettering for your embroidery projects.

The **SewWrite** workspace is set up to look like a modern word processor. Letters are entered there from the keyboard and modified by applying various available *font styles* (such as bold, italic or underline) and *monogram styles*. Font styles can be applied to letters before they are entered by clicking the appropriate font toolbar buttons, or afterwards by selecting the letters and then clicking the desired style(s). In contrast, monogram styles are applied to existing letters by *first* selecting them and *then* choosing the monogram style from drop-down combo list. Finally, you can set (and store) the properties for the embroidery stitches written by *SewWrite* (such as fill and satin density) by clicking the [Stitch Properties](#) item on the Tools Menu.

Once the letters have been arranged in the workspace, they can be saved by clicking the File/Save As menu item. The "Save As" [dialog](#) opens, allowing you to choose a name for the workspace file which - like an ordinary document - will be saved so it can be retrieved later for further editing in **SewWrite**. It has an extension ".swr" which identifies it uniquely as a **SewWrite** file. If the document file is deleted, the user will not be able to edit the file in **SewWrite**.

In addition to the document file, an embroidery file will be saved with the same name as the document file, but with a Melco ".exp" file type extension. A color file (with extension ".inf") is also saved. You may open the embroidery file in an editor (such as **SewWhat-Pro**) to change it to the format needed by your embroidery machine. You can also edit the file, merge it with other designs, etc. It is possible to set the [path](#) to your favorite embroidery editor so that the embroidery file written by **SewWrite** will be automatically opened in that editor. There is a button at the bottom of the "Save As" dialog to change or verify the settings for the embroidery stitches.

Basic Letter Entry and Editing Capabilities

Letters are entered from the keyboard (as in any word processor). A caret (vertical blinking line) appears to the right of the last entered letter and indicates the position where the next typed letter will be entered. The arrow keys or a left-mouse click can be used to move the caret around in the **SewWrite** workspace.

Many editing operations in **SewWrite** may be applied to multiple consecutive letters by first selecting them. Letter selection can be done from the keyboard by first holding down the SHIFT key and using the arrow keys (or HOME/END keys) to select one or more letters. This action is identical to what most word processors implement. Selection can also be performed by dragging a selection rectangle around letters with the left mouse button held down.

Toolbar functionality

The functions of the various [toolbar](#) buttons at the top of the *SewWrite* workspace are described here.



Font Name – by clicking the up/down arrow all of the available fonts are shown and a selection can be made from those available. Additional fonts will be added in the future.

Font Size – the font size is shown in points. As an example, the 32 point size yields a font which is approximately ½ inch (from the top of the ascender to the bottom of the descender of that font); 72 points is approximately 1 inch. The font size can be changed for a selected letter, word or line of a data by highlighting those objects.

Line Spacing – is the amount of space between the first line of text and the second, third, etc. The line spacing can be adjusted by typing your text and selecting a line spacing number. The line spacing can also be changed after the information has been typed by highlighting all of the data and changing the line spacing number.

Subscript & Superscript - will allow a letter or number to be typed slightly above or below the actual line of data. Subscript will move the letter/number below and Superscript will move it above. This is done by highlighting the letter/number and selecting your choice. The location can be adjusted by using the Kerning option (see explanation below). Remember to turn the button off when finished.

Grow and Shrink Font – Grow Font increases the size of a letter, word or phrase and Shrink Font will reduce the size. Highlight the area you want increased or shrunk and click the applicable button. Remember to turn the button off when finished.

Kerning – there are left, right, up and down buttons to make adjustments in the location of a highlighted letter, word or phrase. This is done by highlighting your letter, word or phrase and clicking the applicable button until you get your selected item in the location of your choice.

Monogram – provides the user with numerous monogram styles. You must highlight your selection first and then select the monogram style you want.

Symbols – provides Math (Greek) and 'other' symbols such as the cent sign, registration, etc.

1.1.2 Contacting Us

To obtain contact support for this product, please write to the following email address:

support@sandscomputing.com

1.1.3 FAQ

How To . . .

- [Purchase SewWrite](#)

1.1.4 Purchase SewWrite

You may purchase **SewWrite** from the Shop page of the S & S website:

<http://sandscomputing.com/products-shop/>

or any of our reseller websites. Click the *Add-to-Cart* button on the *Shop->SewWrite* webpage to purchase the license. If you want to order a CD, use the down-arrow on the Add-to-Cart button to select the CD version of the software.

To update to the latest version of the software, use the *Download* button on the *Shop->SewWrite* webpage of our website.

There is a 14 day DEMO period during which you may use the software. During the DEMO, you are restricted to saving embroidery files with no more than 10 characters each and no more than 100 characters in total. Once the DEMO has expired (or sooner), you can either uninstall the software or purchase a license (*Add-to-Cart*). After purchasing the license, the registration information will be emailed to you and you can register the DEMO to make it a licensed copy. You DO NOT have to uninstall the DEMO if you want to keep the software, but only register it after receiving the license information.

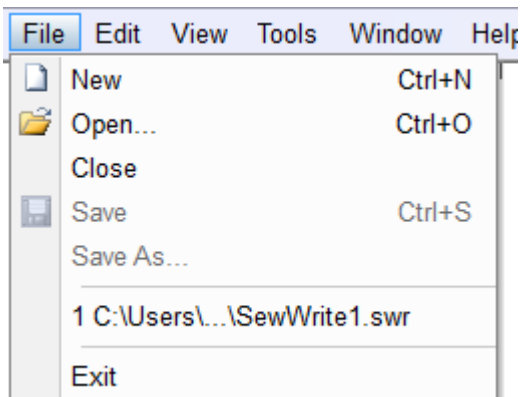
1.1.5 Videos

Video tutorials for SewWrite can be found and viewed at this location ([videos](#)) on our website. Scroll to the "videos" button to open the carousel.

1.2 Menus

1.2.1 File Menu

File menu commands



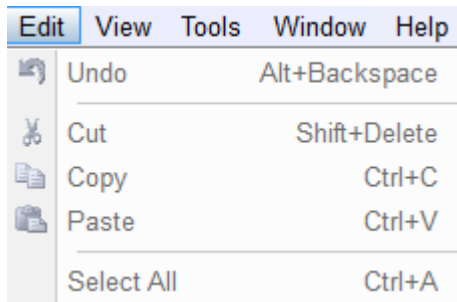
The File menu offers the following commands:

New	Creates a new blank document file.
Open	Opens an existing document file.
Close	Closes the presently active document file.
Save	Saves an open document file, using the same file name, and stores the embroidery stitches in a Melco (.exp) file.
Save As	Saves an open document file (and the associated embroidery file) to a specified file name. Options for selecting embroidery properties are presented.

Above the *Exit* command is a list of up to four files that were recently opened. Clicking on a file in that list will open it in the SewWrite workspace.

1.2.2 Edit Menu

Edit menu commands

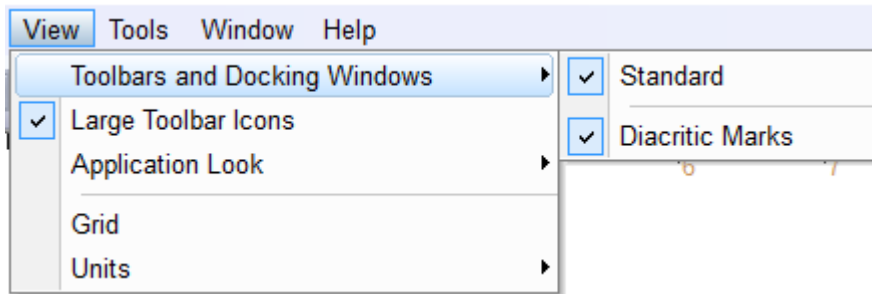


The Edit menu offers the following commands:

Undo	allows deletions and application of monogram styles to be undone
Cut	deletes selected text
Copy	copies selected text to the clipboard
Paste	paste clipboard text at cursor
Select All	selects all text in the document

1.2.3 View Menu

View menu commands



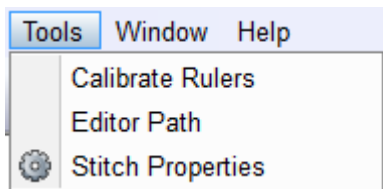
The View menu offers the following commands:

Toolbars and Docking Windows

- [Standard](#) Displays (checked) or hides (unchecked) the main toolbar.
- [Diacritic Marks](#) Displays (checked) or hides (unchecked) the vertical diacritic marks bar.
- [Large Toolbar Icons](#) Displays the large (checked) or small (unchecked) toolbar icons.
- [Grid](#) Displays or hides grid to enable accurate alignment with kerning.
- [Units](#) Displays a pop-up to choose units for the ruler in American (inch) or metric (cm).

1.2.4 Tools Menu

Tools menu commands



The Tools menu offers the following commands:

Calibrate Ruler	Opens dialog to calibrate the on-screen ruler(s)
Editor Path	Select an embroidery editor to automatically open when the "swr" document is saved.
Stitch Properties	Opens dialog to set and save embroidery properties

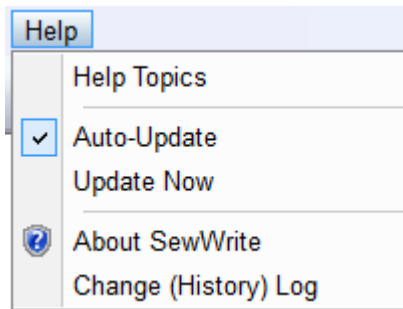
1.2.5 Window Menu

The Window menu offers the following commands, which enable you to arrange multiple views of multiple documents in the application window:

Cascade	Arranges windows in an overlapped fashion.
Tile	Arranges windows in non-overlapped tiles.
All Windows	specified window.

1.2.6 Help Menu

Help Menu commands



The Help menu offers the following commands:

Help Topics	List help topics
Auto-Update	Toggles on/off the auto-update feature
Update Now	Checks website for available update
About SewWrite	Display program information, version number, copyright
Change (History) Log	Display history of changes to SewWrite

1.3 File Commands

1.3.1 New

Use this command to create a new document in **SewWrite**. You can open an existing document with the [Open command](#).

Shortcuts



Toolbar:
Keys: CTRL+N

1.3.2 Open

Use this command to open an existing **SewWrite** document file in a new window. You can open multiple documents at once. Use the Window menu to switch among the multiple open documents.

When you use this command, **SewWrite** displays the [File Open Dialog](#) so you can select the pattern file(s) to open.

Alternatively, you can open an existing document by selecting it from the most recently used (MRU) file list in the File menu, if it was recently opened.

You can create new blank pattern files with the file [New command](#).

Shortcuts



Toolbar:
Keys:

CTRL+O

1.3.3 Close

Use this command to close all windows containing the active document. **SewWrite** suggests that you save changes to your document before you close it. If you close a document without saving, you lose all changes made since the last time you saved it. Before closing an untitled document, **SewWrite** displays the [File Save As dialog](#) and suggests that you name and save the document.

You can also close a document by using the Close icon on the document's window, as shown below:



Shortcuts

Keys:

CTRL+F4 closes a document window
ALT+F4 closes the **SewWrite** window or dialog box

1.3.4 Save

Use this command to save the active document using its current name and directory. When you save a document for the first time, **SewWrite** displays the [File Save As Dialog](#) so you can name your document (and the associated embroidery file). If you want to change the name and directory of an existing document before you save it, choose the file [Save As](#) command.

Shortcuts



Toolbar:
Keys:

CTRL+S



1.3.5 Save As

Use this command to save and name the active document and its associated embroidery file. **SewWrite** displays the [File Save As Dialog](#) box so you can name your pattern file.

To save a document file with its existing name and directory, use the [Save command](#).

1.4 Edit Commands

1.4.1 Undo

Use this menu item/toolbar key to undo certain changes to the **SewWrite** workspace.

Shortcuts

Toolbar:



Keys: CTRL+Z

1.4.2 Cut

Use this menu item/toolbar key to delete (cut) the selected text from the **SewWrite** workspace.

Shortcuts

Toolbar:



Keys: CTRL+X

1.4.3 Copy

Use this menu item/toolbar key to copy the selected text to the Clipboard (for pasting) from the **SewWrite** workspace.

Shortcuts

Toolbar:




Keys: CTRL+C

1.4.4 Paste

Use this menu item/toolbar key to paste the previously selected text to the **SewWrite** workspace.

Shortcuts

Toolbar: 
Keys: CTRL+V

1.4.5 Select All

Use this edit menu item to select all the letters for copying or other editing.

Shortcuts

Keys: CTRL+A

1.5 View Commands

1.5.1 Toolbars

1.5.1.1 Standard

Click this command to display and hide the main toolbar, which includes buttons for some of the most common commands in **SewWhat-Pro**, such as File Open. A check mark appears next to the menu item when the toolbar is displayed.

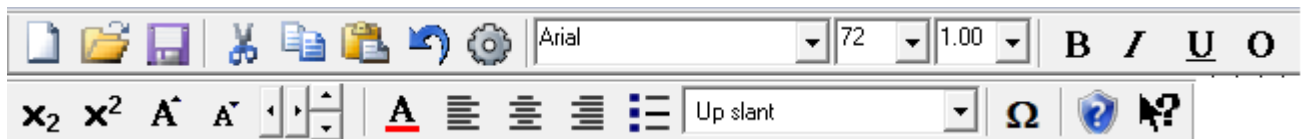


Fig 1. The main SewWrite toolbar

The functions of individual toolbar buttons and boxes shown in Fig. 1 are described below:

Click **To**



Open a new document.



Open an existing document. **SewWrite** displays the Open dialog box, in which you can locate and open the desired file.



Save the active document and its associated embroidery file with its current name. If you have not named the document, **SewWrite** displays the Save As dialog box.



Cut (delete) selected letters from the document and stores them in the clipboard for possible undo.



Copy the selected letters to the clipboard.



Insert (paste) the letters stored in the clipboard into the active window.



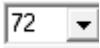
Undo certain operations.



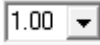
Set stitch properties for the embroidery file.



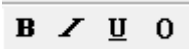
Open a list of [available fonts](#) to be applied to selected and subsequent text.



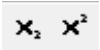
Click the down arrow to open a list of [font sizes](#) (in points, 72 points=1"), or type in a size (which must be less than 400 points)



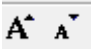
Open a list of available [line spacings](#), in 0.25 increments as fractions of the font size.



B (bold), **I** (italic), **U** (underline), or **O** (outline) apply one or more of these styles to either the selected or subsequent text.



Apply the subscript or superscript style to the selected letters.



Increase or decrease the size of the selected letters.



[Kern](#) (increase or decrease the horizontal or vertical separation of) the selected letters.



Change the color of the selected or subsequent text.




Change the [paragraph](#) indentation for the selected and subsequent text.



Create bullets (not implemented yet).



SewWrite 

Apply a [monogram style](#) from drop-down combo list to selected text.



Enter [symbol](#) text into the document.



Displays information about SewWrite.



Context sensitive help.

1.5.1.2 Diacritical Marks

Click this command to display and hide the list of diacritical marks that may be entered into the SewWrite workspace. This scrollable list (see Fig. 1) appears on the right side of the workspace.

Diacritical marks in the Latin script are used to change the sound-values of the letters to which they are added. You may add any of the markings to letters in SewWrite by clicking on the mark in the list. The mark may need to be [kerned](#) for correct alignment with the preceding letter. It is easiest to add the marks *after* **all** the (unmarked) letters have been entered.

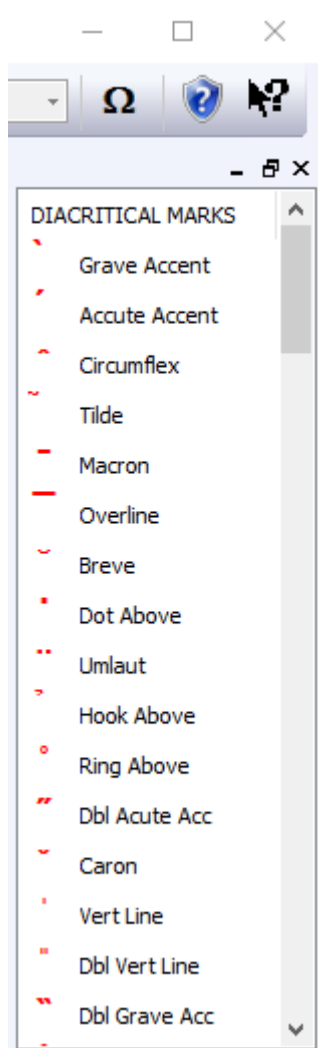


Figure 1. Scrollable list of diacritical marks.

1.5.2 Large Icons

Click this View menu item to toggle between large (24 X 24 px) and small (16 X 16 px) toolbar icons.

1.5.3 Grid

Displays or hides a grid which helps to accurately align (particularly if [kerning](#) is used).

1.5.4 Units

Click this menu item to display a pop-up menu (Fig. 1) allowing a choice between American (in) or metric (cm) units for the on-screen ruler.

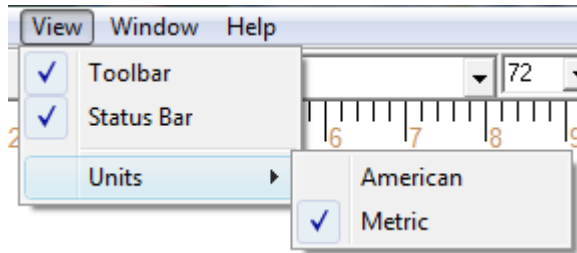


Fig 1. Units menu item.

1.6 Tools Commands

1.6.1 Calibrate Ruler

Click this menu item to pop-up the ruler calibration dialog (Fig. 1). Use this to adjust the horizontal and vertical rulers in **SewWrite** so that the displayed lengths are accurate. Either a metric (mm) or American (inches) ruler can be held up to the screen rulers while the adjustments are made by clicking the associated scroll arrows.

Using accurate measurements is important for correct placement of lettering on existing embroidery patterns.

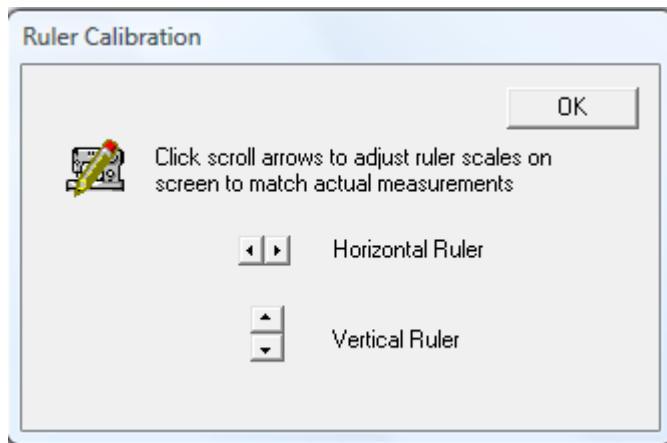


Fig. 1 Dialog for calibrating rulers displayed in SewWrite.

1.6.2 Editor Path

Click this menu item to pop-up an Explorer window to select the embroidery editor which will automatically open when a **SewWrite** document file (*.swr) is [saved](#). The associated embroidery file (*.exp) will be displayed in the chosen embroidery editor.



The first time you save a **SewWrite** document, you will be advised that an embroidery editor path can be chosen. After that, if you wish to choose a different editor, just click this menu item. Also, to cancel the editor at any time, click the menu item and leave the editor File Name blank.

1.6.3 Resize Toolbar Icons

Click this tools menu item to toggle the size of the icons on the **SewWrite** toolbar.

1.6.4 Stitch Properties

This dialog (Fig. 1) allows you to set and store various stitch properties for the embroidery file that is saved along with the **SewWrite** document file.

Fill Density

The satin fill density can be chosen to be normal, high or low. The higher the setting, the closer together will be the adjacent rows of stitches.

Add Outline to Filled Letters

This will add an outline stitch to solid letters.

Outline Style

The three available styles are running, satin and applique. Settings for satin style (there is a satin finish stitch for the applique) include:

Satin Density

Separation of adjacent stitches in the direction being sewn.

Satin Width

Side-to-side extend of the stitches.

Join Adjacent Threads

Check this option to automatically join adjacent threads that have the same color.

Emb(roidery) File Type

Use this drop-down list to select the embroidery file format used when saving the **SewWrite** file. In Fig. 1, the Brother file type "PES" has been selected.

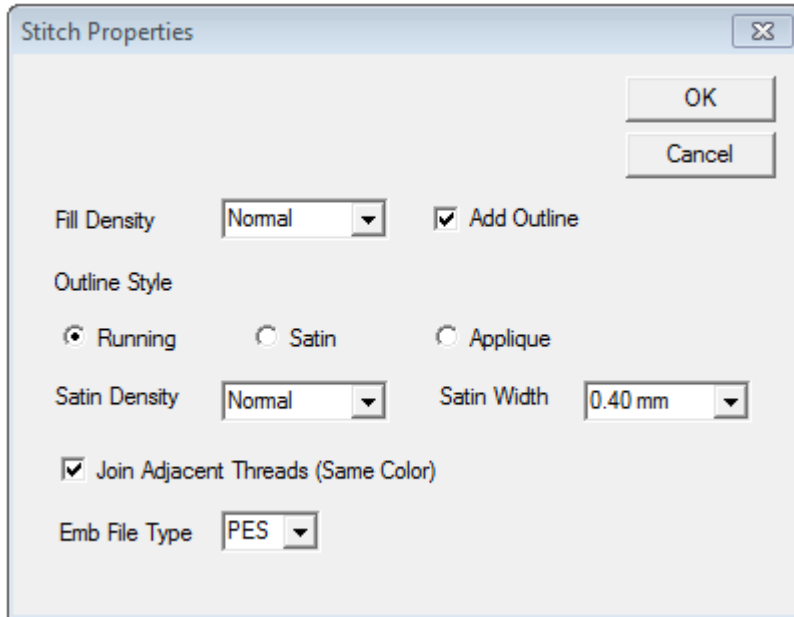


Fig. 1 Stitch Properties Dialog

Shortcuts

Toolbar:



1.7 Windows Commands

New Topic.

1.7.1 Cascade

Use this command to arrange multiple opened windows in an overlapped fashion.

1.7.2 Tile

Use this command to arrange multiple opened windows in a non-overlapped fashion.

1.7.3 All Windows



SewWrite displays a list of currently open document windows at the bottom of the Window menu. A check mark appears in front of the document name of the active window. Choose a document from this list to make its window active.

1.8 Help Commands

1.8.1 Help Topics

Use this command to display the opening screen ("Get Started") of Help. From the opening screen, you can jump to step-by-step instructions for using **SewWrite** and various types of reference information.

Once you open Help, you can click the Contents button whenever you want to return to the opening screen.

1.8.2 Auto-Update

Use this command to toggle (turn on/off) automatic updating of **SewWrite** software. When this menu item is checked (unchecked), auto-updating is allowed (prevented). With auto-updating allowed, the **S & S website** will be checked whenever the application is opened (but not more than once daily) for available updates. If there is an update available, the user will be given the opportunity to install it. The installation will *automatically* close the **SewWrite** workspace, remove the older version, install the update, and restart the application.

1.8.3 Update Now

Use this command to search the **S & S website** *immediately* for the availability of an update for **SewWrite**. If an update is found, the user is given a choice to install it.

1.8.4 About SewWrite

Use this command to display the copyright notice, version number and registration information for your copy of **SewWrite**.

1.8.5 Change (History) Log

Use this command to display the history of changes made to **SewWrite**.

1.8.6 Context Help

Use this command to obtain context-sensitive help for toolbar and menu items. When you (single left) click this toolbar button, the cursor changes to a "?" icon. Then click on the item for which you want help, and the help manual will open to an appropriate topic.

Shortcuts

Toolbar:



1.9 Utilities

1.9.1 File Open Dialog

This dialog allows you to open an existing (previously-saved) **SewWrite** document file (with the extension "*.swr") for further editing.

1.9.2 File Save As Dialog

This dialog (see Fig. 1) allows you to choose the name of the **SewWrite** document (and embroidery) file to be saved, as well as the folder to save the file in.

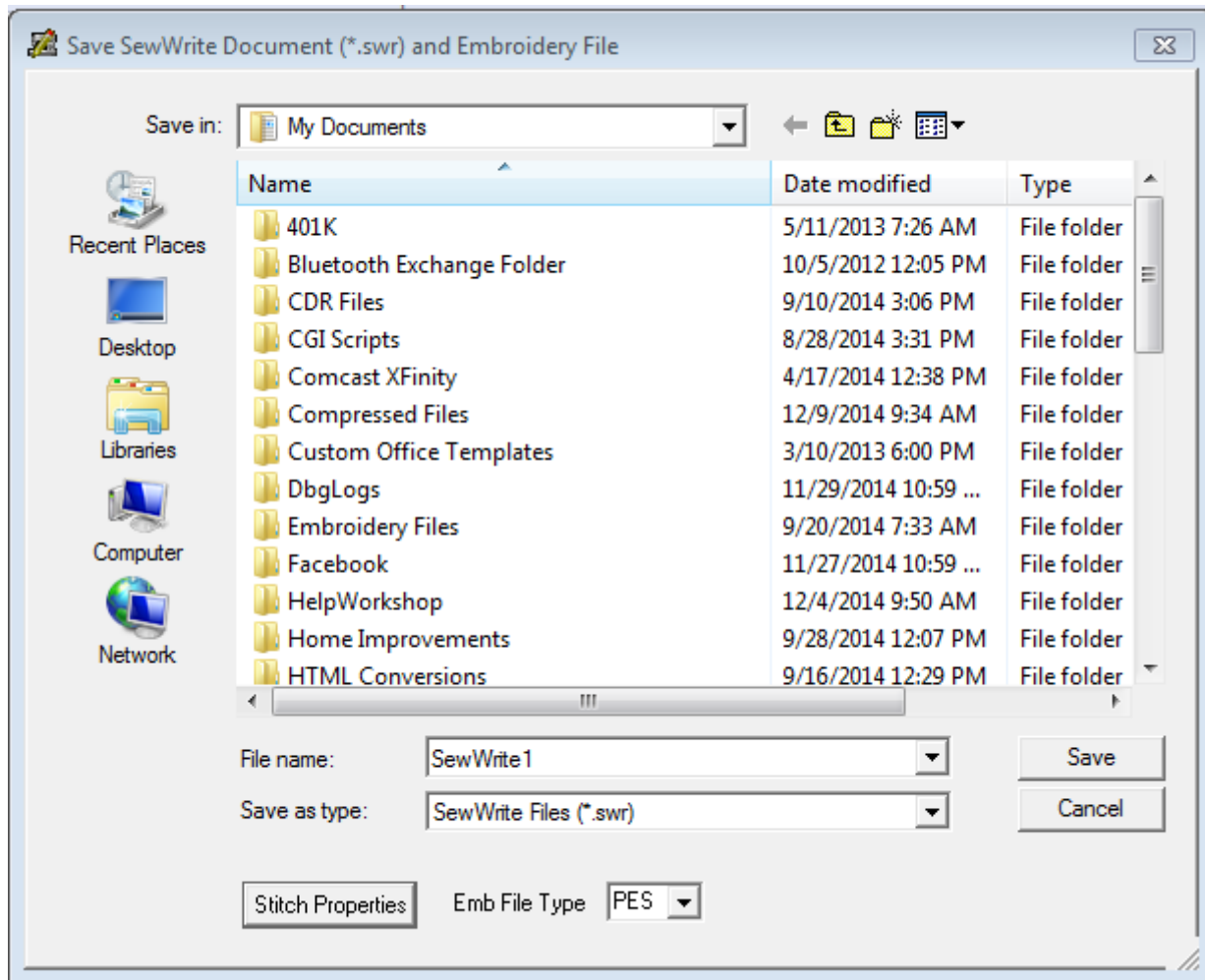


Fig 1. SewWrite File Save As dialog.

The following options allow you to specify the name and location of the file you're about to save:

File name

Type a new filename to save an embroidery file with a different name. **SewWrite** automatically adds the extension ".swr" .

Save in

Select the folder in which you want to store the embroidery file.

Save as type

Only the file extension (type) "*.swr" is allowed for the saved file. The associated embroidery file type is chosen by using the Emb File Type list (explained below).

Stitch Properties

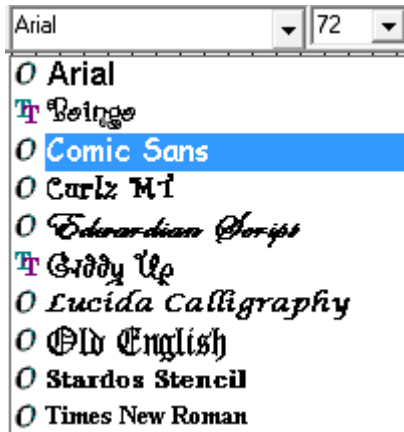
Click this button to open the [Stitch Properties dialog](#), where you can verify or select various properties for the embroidery file that will be saved along with the document (.swr) file.

Emb File Type

Open this drop-down list (by clicking on the down scroll arrow) to select the embroidery file type to save. The scroll arrows can be used to display all the available file types. Click on the type to use (in Fig. 1, the Janome "PES" type has been chosen).

1.9.3 Font Selection

Click on the font selection combo box to open the drop-down list of available fonts. Click on the desired font to apply it to selected text or text to be entered. The preview of the font shows how the font will display.



1.9.4 Font Size

This [toolbar](#) combo box (see Fig. 1) gives a list of font sizes in units of points (72 points = 1"), in steps of 36 points. Click on the down-arrow to open the list of available sizes. You can either choose (by clicking) one of the available sizes, or type in your own customized point size. Sizes must be less than 400 points and greater than, or equal to, 36. Remember that the large the point size and the wider the font letters are, the more likely is that the satin fill will need to be split inside the sewn area.

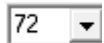


Fig 1. Font size combo box.

1.9.5 Line Spacing

This combo box (Fig. 1) contains available line-spacings (in units of $1/4 = 0.25$). The actual line spacing is calculated as the value from this drop-down list multiplied by the maximum font height on the current line.

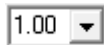


Fig 1. Line-spacing combo box.

1.9.6 Kerning

Kerning is the process of adjusting the spacing between characters in a proportional font, usually to achieve a visually pleasing result. In **SewWrite**, both horizontal and vertical adjustments of selected letters can be achieved with either the toolbar kerning arrows (see **Shortcuts** below) or by holding down the Control key and using the keyboard arrows.

If the INSERT key is on (check in the [status pane](#)), then the horizontal kerning increases (or decreases) the separation equally between ALL selected letters (instead of shifting all the selected letters as a block). The different types of kerning are shown below:

Test	original text
Test	's' kern right
Test	'st' kern right
Test	"Test" selected + INS kern between all letters

Shortcuts



Toolbar:
Keys:

CTRL+Arrow Keys or INSERT+Arrow Keys

1.9.7 Monogram Styles

Monogram styles can be applied to selected text by choosing from the scrollable drop-down list shown in Fig. 1. You *must* first select the letters to be monogrammed, either by drawing a selection rectangle around them by holding down the left-mouse button or by pressing the SHIFT-key and using the keyboard arrow/HOME/END keys. (This is the same as any standard word processor). Then click on the desired monogram style (in Fig. 1, the "Up slant" style was chosen) and the letters will be displayed in this style.

Normally, you would choose only 3 letters for most monogram styles. However, the arching styles and the other "path" styles - Polygon, Diamond, or Bezier - work well with more than 3 letters. These path styles open an editing window (see Fig. 2) which allows you to interactively create the path (or in the case of the Diamond style, the outline) for the letters. In Fig. 2 shows the "Arch-Up" editor. The radius of the arch can be increased or decreased by left-clicking the red ball and dragging away or towards the center ("+" point, and the starting point can be moved by rotating the ball in a circle around the center point. When editing is finished, click outside the edit box OR press the ESC key to return to the **SewWrite** workspace and the style will be applied to the letters there. Once the editing box is closed for these styles, further manual editing is possible or you can [Undo](#) the style before applying it again.

A useful tool for sizing and placing the lettering for the arching, Bezier, and Polygon tools is the [Paste Image Template](#) tool.

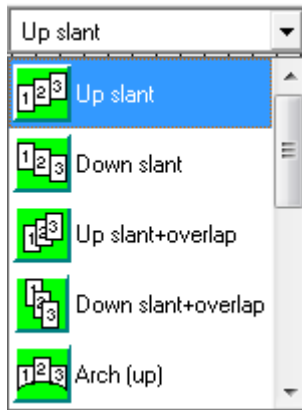


Fig 1. Monogram styles drop-down combo list.

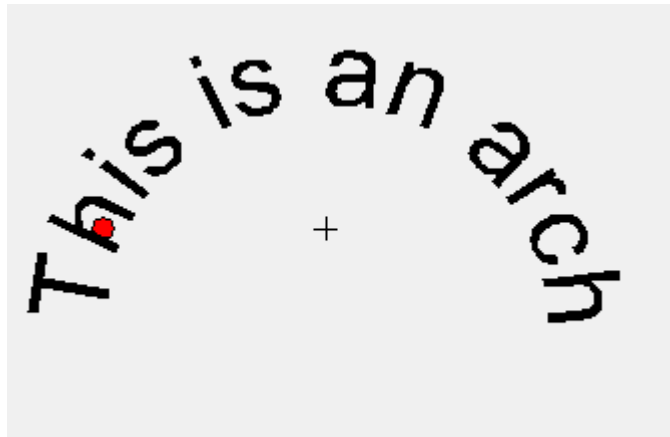


Fig 2. The "Arch-Up" editing tool.

1.9.8 Paragraph Alignment

The three paragraph alignment styles (see Fig. 1) can be chosen either *before* text is entered or afterwards by selecting the text to be aligned.

Note that in **SewWrite** there is no explicit page size for alignment. Instead, the page width is computed based on the widest line of text. For example, if two lines of text are entered that are exactly the same length, then all three options will display the text the same in **SewWrite**. However, if two or more lines have different lengths, then the centering options will display differently (see Fig. 2 below).



Fig 1. Paragraph alignment (left align by default).

Line 1 is short. Line 2 is longer. Line 3 is the longest.	Line 1 is short. Line 2 is longer. Line 3 is the longest.	Line 1 is short. Line 2 is longer. Line 3 is the longest.
Left	Center	Right

Fig 2. Demonstration of how SewWrite applies paragraph styles.

1.9.9 Paste Image Template

The *Paste Image* button (see Fig. 1) appears in certain [monogram style](#) views (arching, polygon, Bezier curve). Clicking this button will paste the contents of the clipboard into the view. The clipboard image acts as a template for arranging and sizing the lettering in **SewWrite**. For example, the clipboard image can be an embroidery pattern to which lettering will be added.



Fig. 1

The easiest way to obtain this image is by using the Windows "Snipping" tool (available in VISTA and later operating systems) to make a snapshot of the pattern that is opened in your embroidery editor. In Fig. 2, an embroidery pattern has been pasted from the **SewWhat-Pro** (c) editor into the Arch-Up monogram style view in **SewWrite**. The image (and lettering) are scaled to fit this workspace with the relative size of each kept proportional. Note how the image acts as a template for arranging the arch. When the arched text is saved (note that upon leaving the monogram-style edit space, the template will disappear), and subsequently merged with the pattern, it will look *exactly* as shown in Fig. 2.

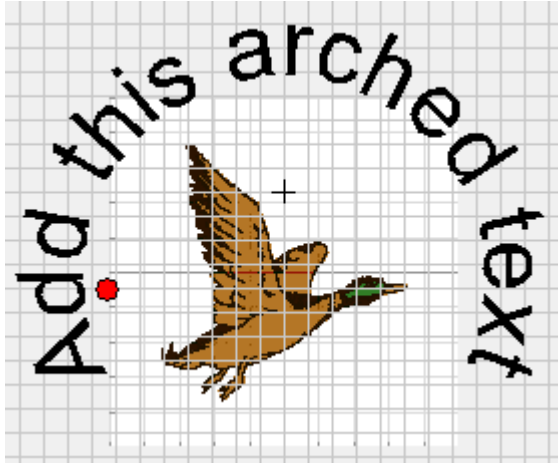


Fig. 2

1.9.10 Status Bar

The status bar (Fig. 1 below) contains information about the SewWrite workspace.

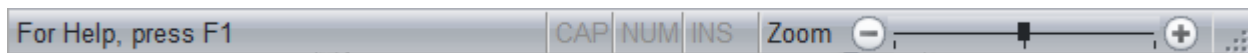


Fig 1. The SewWrite status bar.

The left side of the status bar shows a message depending on where your cursor is located. The default message is shown above, but if the cursor is moved over a toolbar button or menu item, information about that item will appear there.

The state of the caps lock, num lock and insert keys are indicated in the next three panels.

Finally, the zoom state is shown on the right of the status bar. The zoom (relative to 100%, or normal size) can be change either by dragging the zoom button to the left (make workspace image smaller) or to the right (enlarge the workspace image). Also, the "-" and "+" buttons can achieve the same effect.

1.9.11 Symbol Dialog

Use this dialog to enter math (Greek) symbols or other special symbols (see Fig. 1). Select the character set from the drop-down list and then click on the individual characters to enter them into the **SewWrite** workspace.

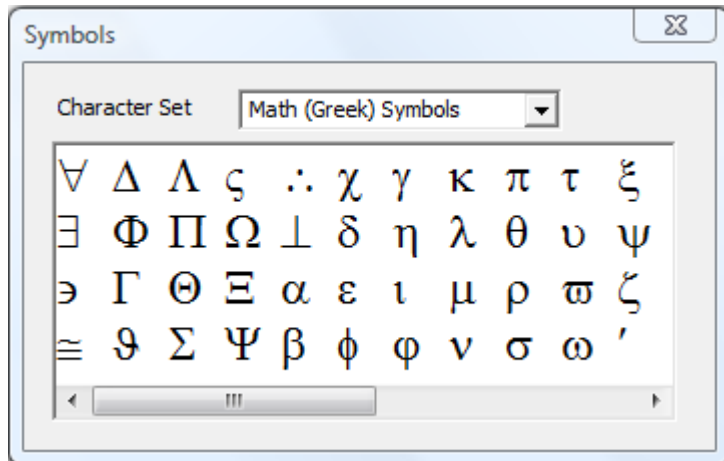


Fig. 1 The symbol character dialog

1.10 Character Properties

New Topic.

1.10.1 Bold

Click this toolbar button to toggle (change) the bold state of either selected or subsequently typed letters.

1.10.2 Bullets

Click this toolbar button to add bullets to a list or outline.

1.10.3 Color

Click this toolbar button to toggle (change) the color of either selected or subsequently typed letters.

1.10.4 Decrease Letter Size

Click this toolbar button to decrease the font size a little for either selected or subsequently typed letters.

1.10.5 Increase Letter Size

Click this toolbar button to increase the font size a little for either selected or subsequently typed letters.



1.10.6 Italic

Click this toolbar button to toggle (change) the italic state of either selected or subsequently typed letters.

1.10.7 Outline

Click this toolbar button to render the selected or subsequently typed text as outlines.

1.10.8 Para Center

Click this toolbar button to center the selected or subsequently typed lines of text.

1.10.9 Para Left

Click this toolbar button to left-align the selected or subsequently typed lines of text.

1.10.10 Para Right

Click this toolbar button to right-align the selected or subsequently typed lines of text.

1.10.11 Subscript

Click this toolbar button to subscript the selected or subsequently typed lines of text.

1.10.12 Superscript

Click this toolbar button to superscript the selected or subsequently typed lines of text.

1.10.13 Underline

Click this toolbar button to toggle (add or remove) underlining of either selected or subsequently typed letters.